

# Self-propelled telescopic boom lift (diesel) :: JLG 660 SJ

## SPECIFICATION



### Reach:

Platform Height	20.32 m
Work Height	22.32 m
Horizontal Outreach	17.30 m
Swing	360° (Continuous)
Platform Capacity	230 kg
Platform Rotator	180° Hydraulic

### Dimensions:

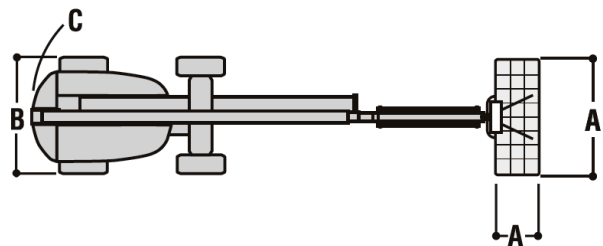
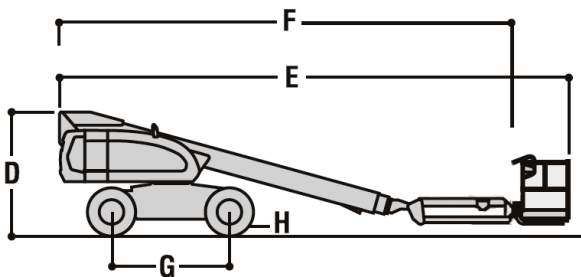
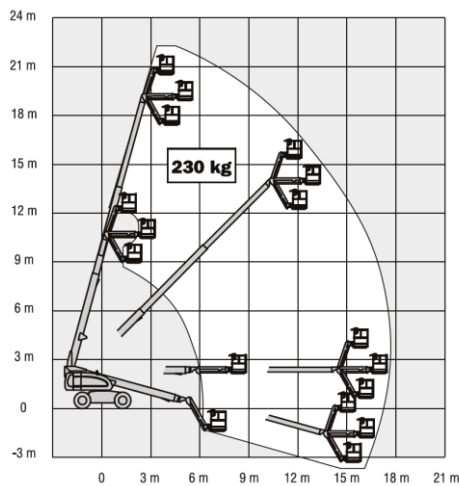
A. Platform Size	0.91 x 2.44 m
B. Overall Width	2.41 m
C. Tailswing (working condition)	1.14 cm
D. Stowed Height	2.57 m
E. Stowed Length	10.21 m
F. Wheelbase	2.46 m
G. Ground Clearance	30 cm
Weight	12,519 kg
Max. Ground Bearing Pressure	5.27 kg/cm <sup>2</sup>

### Chassis:

Drive Speed 2WD	6.8 km/h
Drive Speed 4WD	6.8 km/h
Gradeability 2WD	30%
Gradeability 4WD	45%
Tyres	39 x15-225
Axle Oscillation	20 cm
Turning Radius	(Inside/Outside)
2WD	3.45 m / 5.41 m
4WD	1.65 m / 3.45 m

### Power Source:

<i>Dual Fuel Engine</i>	
GM Vortec 3000 MPFI	61 kW
<i>Diesel Engine</i>	
Deutz D2011L03	36,4 kW
<i>Diesel Engine</i>	
Caterpillar 3044C	47,2 kW
Fuel Tank Capacity	151 l
Hydraulic System	151 l
Auxiliary Power	12V DC



This brochure is for illustrative purpose only and based on the latest information at the time of printing. The manufacturer reserves the right to make changes the specifications, standard and optional equipment at any time, without prior notice.